

±54,162 SF Industrial Building

18361 Galileo Drive, Opp, Alabama 36467



Project Features

CBRE is pleased to announce an excellent purchase opportunity at 18361 Galileo Drive, in Opp Alabama. This building is identified as Plant 2, was built in 2009, and is in excellent condition. Consisting of ±54,162 SF this free-standing industrial building is situated on ±6.37 AC located in Covington County Alabama.

Asking Price: \$2,070,000

PROPERTY DETAILS

Address	18361 Galileo Drive, Opp, Alabama 36467
Building Size	±54,162 SF Freestanding, Industrial Building
Office	±3,499 SF; Single Story Office
Grade-Level Doors	Two (2) Grade-Level Doors
Dock-High Doors	Two (2) Dock-High Doors
Warehouse Clearance	TBD Minimum Warehouse Clear Height
Parking	1.32; 1,000 SF Parking Ratio (±41 Spaces)
Power	TBD
Location	Covington County Alabama
Additional Features	Environmental Assessment completed October 2022, no issues Title V operating permit with 245-ton VOC emissions limit



STORAGE SHED



PAINT BOOTHS



FRONT VIEW



SOUTHWEST VIEW



SOUTHEAST VIEW



OFFICE EXTERIOR



SHOP LOOKING NORTH



PAINT BOOTHS



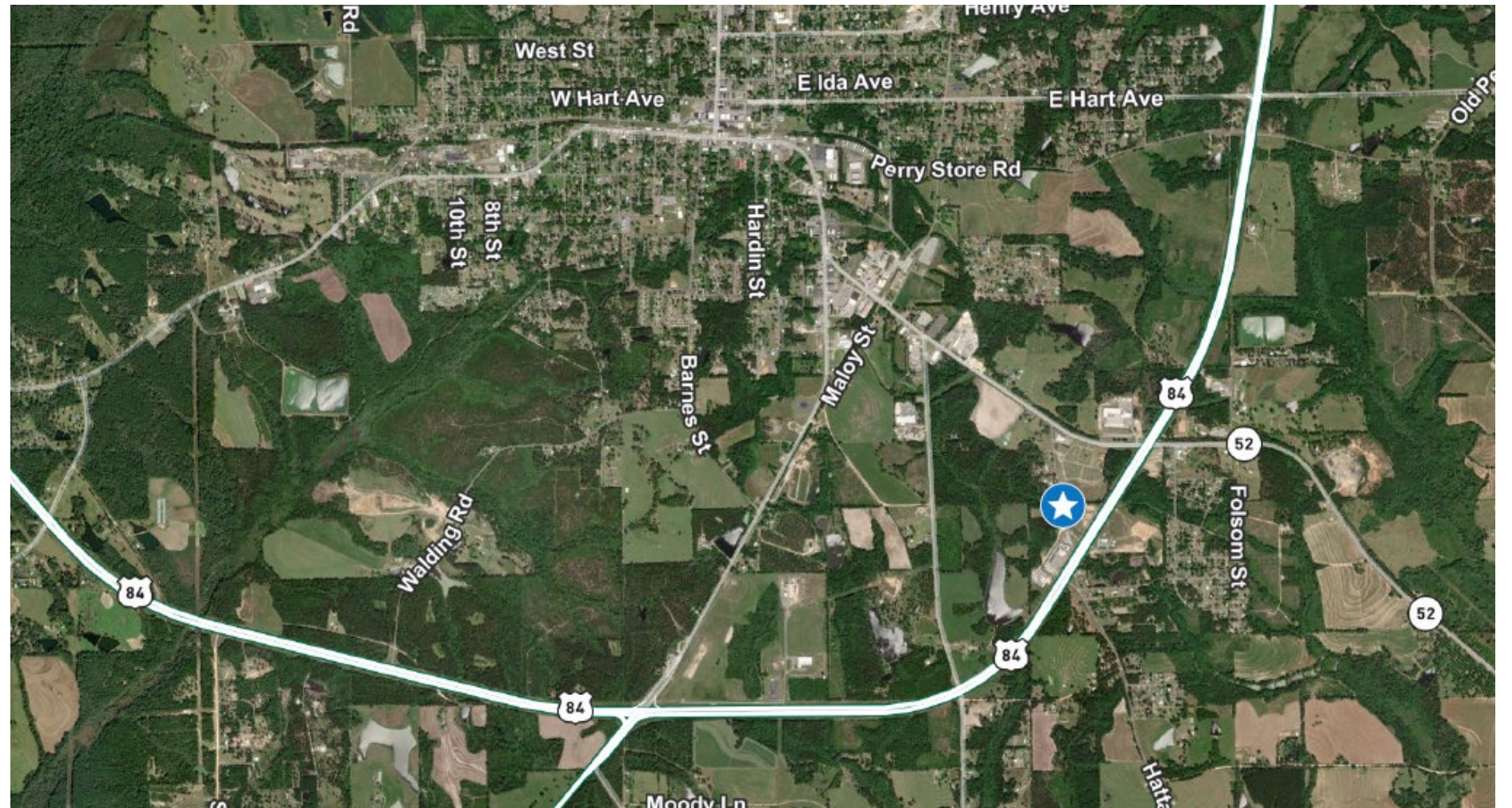
SHOP LOOKING SOUTH



OFFICE AREA

SITE OVERVIEW

Parcel No. (APN)	TBD
Total Site Area	±6.37 AC
Total Site Square Footage	±277,477 SF
Year Built	2009
Zoning	TBD
County	Covington County



Emily Beasy

Transaction Manager

+ 916-337-6032

Emily.beasy@cbre.com

Alex Hayden

Vice Chairman

+1 949 275 7579

Alex.hayden@cbre.com

Metcalf & Company, Inc.

Adam J Metcalfe

Broker

+1 251 610 0069

adam@metcalfec.com

© 2024 CBRE, Inc. All rights reserved. This information has been obtained from sources believed reliable but has not been verified for accuracy or completeness. CBRE, Inc. makes no guarantee, representation or warranty and accepts no responsibility or liability as to the accuracy, completeness, or reliability of the information contained herein. You should conduct a careful, independent investigation of the property and verify all information. Any reliance on this information is solely at your own risk. CBRE and the CBRE logo are service marks of CBRE, Inc. All other marks displayed on this document are the property of their respective owners, and the use of such marks does not imply any affiliation with or endorsement of CBRE. Photos herein are the property of their respective owners. Use of these images without the express written consent of the owner is prohibited.

www.cbre.com/200HattawayRd

